

Regency Place, Canterbury, CT1 1YS

£545 Per Month



## Regency Place

### Canterbury CT1 1YS

Welcome to this end-terrace house located on Regency Place in the historic city of Canterbury. This property is for four occupants and we have a double size room available from mid September, however, we can only let to a single person due to the HMO regulations. Use of a shared kitchen/sitting room with all appliances and shower room. The rent includes all the utilities.

Rent £545 per month - INCLUSIVE of Gas, Electricity, water charges, internet, Council Tax  
Deposit £627  
Available Mid September  
Furnished

Please refer to the fee's tab on our website ([www.sallyhatcher.co.uk](http://www.sallyhatcher.co.uk)) for all information on fee's and deposit options



### Kitchen/diner

9'10" x 14'7" (3.000 x 4.466)

### Living Room

11'2" x 9'3" (3.424 x 2.840)

### Bedroom 1

10'0" x 7'6" (3.070 x 2.303)

### Bedroom 2 combined size

48'1" (14.681)

### Bedroom 3

9'7" x 14'7" (2.928 x 4.464)

### Shower Room

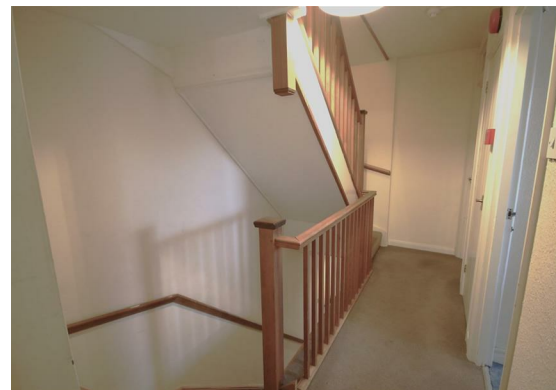
5'7" x 4'11" (1.717 x 1.515)





**Bedroom 4**  
11'0" x 14'4" (3.375 x 4.383)

**Ensuite shower room**  
6'3" x 6'7" (1.911 x 2.009)



## Floor Plan

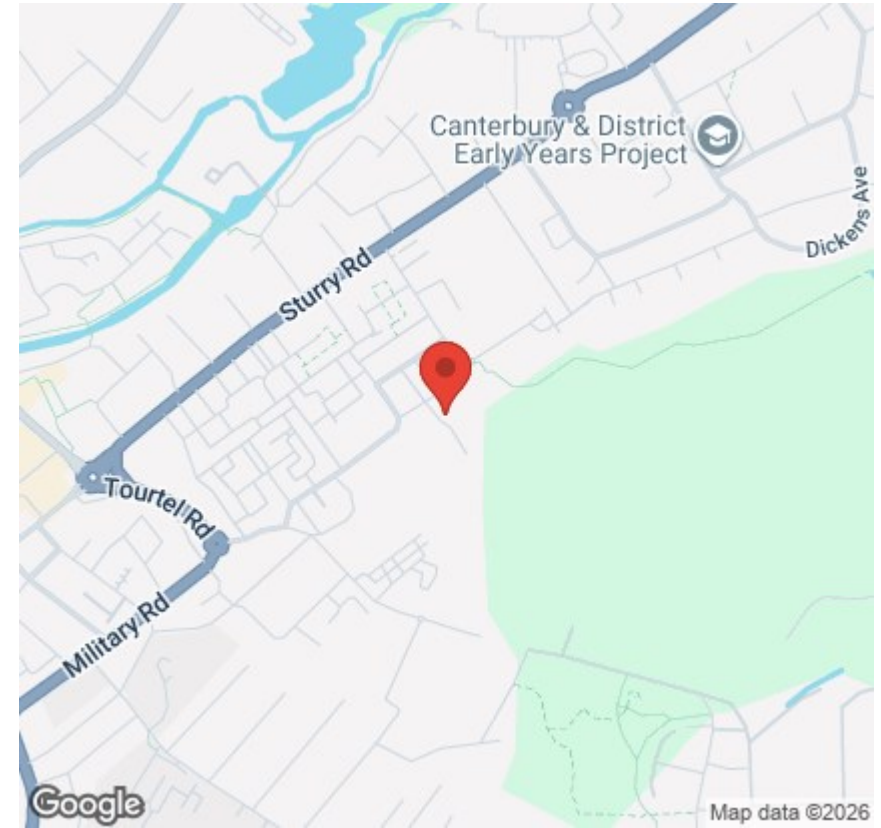


## Viewing

Please contact us on 01227 733888 if you wish to arrange a viewing appointment for this property or require further information.

These particulars, whilst believed to be accurate are set out as a general outline only for guidance and do not constitute any part of an offer or contract. Intending purchasers should not rely on them as statements of representation of fact, but must satisfy themselves by inspection or otherwise as to their accuracy. No person in this firm's employment has the authority to make or give any representation or warranty in respect of the property.

## Area Map



## Energy Efficiency Graph

